



# EZ Glaze™

Glass-like Profiled Polycarbonate Sheet



## Overview

Ez Glaze™ offers smart design, elegant glass-like appearance, versatility, low maintenance and sustainable performance.

Ez Glaze™ incorporates a proprietary profiled design which enables it to be installed over rafters & purlins with a high loading capacity.

Ez Glaze™ is easy to fasten; the panels are simply screw fixed to the supportive structure and joined by overlapping.

Enjoy natural daylight and comfort with outstanding design and finish.

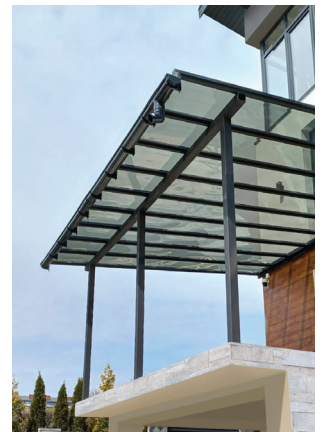
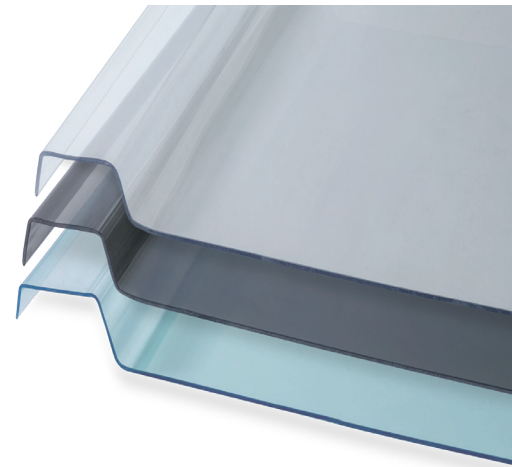
[www.palram.com.au](http://www.palram.com.au)

## Main Benefits

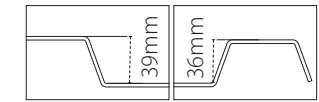
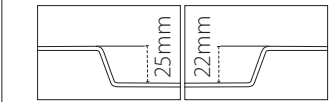
- Lightweight & easy to install
- Fits directly over rafters
- Clear and elegant glass appearance
- Hail & Impact resistant
- 99.9% UV Protection
- Minimal maintenance
- Extra durable

## Typical Applications

- Pergolas and gazebos
- Patio enclosures
- Sunrooms
- Carports



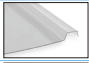
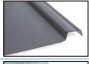

## Profile range

Profile	Rafter width	Profile height	Low profile height
EZ Glaze 50	40-50mm		

## Minimum roof pitch

Ensure that your roof pitch is at least 3 degrees. This will ensure adequate water run off.

## Colour Range

Color		LT (%)	SC*	SHGC**
Clear		90	1.0	0.86
Grey		20	0.51	0.44
Breeze		70	0.61	0.53

\*Shading Coefficient

\*\*Solar Heat Gain (SHGC)

Additional colours are available subject to MOQ.

## Loads Resistance

Wind Uplift: 2.0 Kpa

Wind Load: 4.0 Kpa

Tested to comply with AS4040.1

\* Maximum recommended single unit length is 7,000mm

## Product Availability

Thickness	3 mm
Cover Width	600 mm
Total Width	673 mm
Maximum Length	7,000 mm

## Flammability

EZ Glaze™ complies with the most demanding international fire resistance standards in the field of plastic.

- AS9705- Group 1 AS1530.3- Ignitability- 0, Spread of Flame- 0, Heat Index- 0, Smoke- 2.

\*For more detailed information please contact your Palram distributor.



Warranties only apply to installations and maintenance that follow Palram installation instructions and specifications.



**PALRAM SA/NT**  
517A Cross Keys Road  
Cavan SA 5094  
Tel: (08) 8262 2288  
Fax: (08) 8262 3388  
salessa@palram.com

**PALRAM NSW/ACT**  
Unit 2, 26 Redfern St.  
Wetherill Park, NSW 2164  
Tel: (02)8788 6100  
Fax: (02) 8788 6199  
salesnsw@palram.com

**PALRAM QLD**  
Unit 9C / 380 Bilsen Road  
Geebung QLD 4034  
Tel: (07) 3172 5581  
Fax: (07) 3172 5516  
salesqld@palram.com

**PALRAM VIC/TAS**  
34 Buys Court  
Derrimut VIC 3030  
Tel: (03) 9219 4444  
Fax: (03) 9219 4455  
salesvic@palram.com

**PALRAM WA**  
74 Christable Way  
Landsdale WA 6065  
Tel: (08) 9302 4173  
Fax: (08) 9302 5287  
saleswa@palram.com



87733 - 12/2023

In as much as Palram Industries has no control over the use to which others may put the material, it does not guarantee that the same results as those described herein will be obtained. Each user of the material should make his own tests to determine the material's suitability for his own particular use. Statements concerning possible or suggested uses of the materials described herein are not to be construed as constituting a license under any Palram Industries patent covering such use or as recommendations for use of such materials in the infringement of any patent. Palram Industries or its distributors cannot be held responsible for any losses incurred through incorrect installation of the material. In accordance with our company policy of continual product development you are advised to check with your local Palram Industries supplier to ensure that you have obtained the most up to date information.

